

Wall Mount Gain MiMo Antenna

WMMG-7-27



- Supports MiMo & Diversity across 2G/3G/4G
- Two wideband elements with gain
- Durable wall mount housing
- Suitable for mast, wall and desk mounting

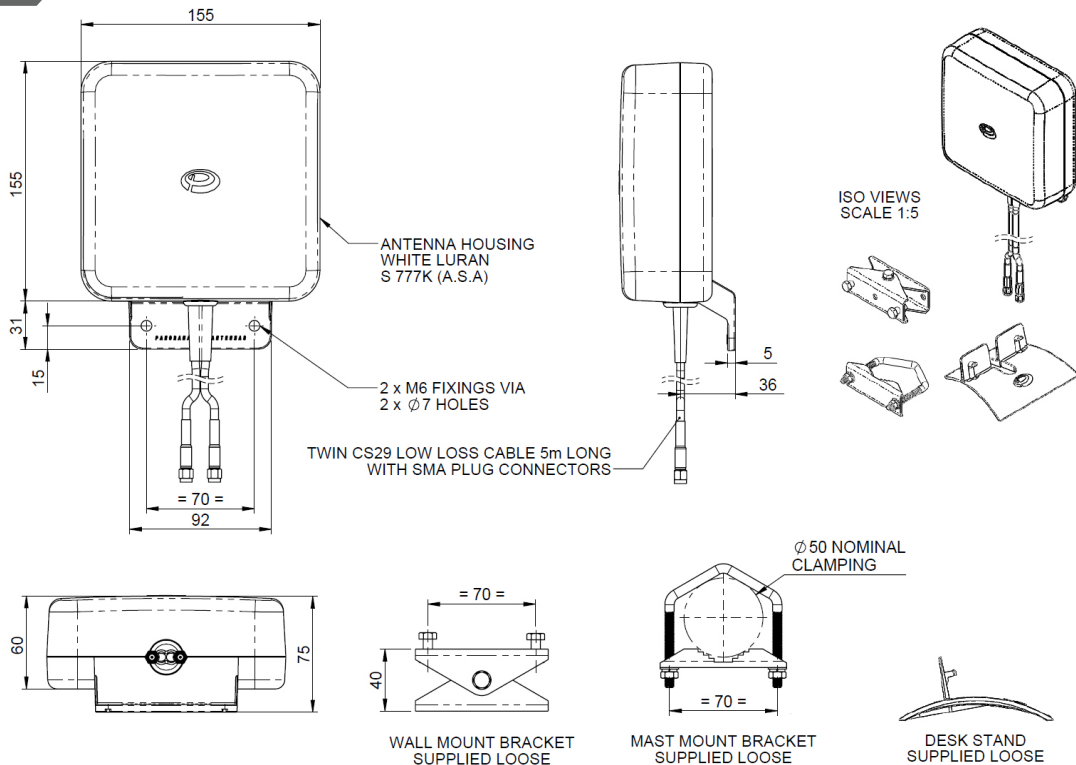
The WMMG antenna provides an innovative and future proof solution for 2G / 3G and 4G networks. Incorporating two separately fed ultra wideband elements in a single housing the WMMG is equipped to provide client side MiMo and diversity support for the networks of today and tomorrow. With 2dBi gain at 698-960MHz, 5dBi gain at 1710-2170MHz and 4dBi gain at 2.2-2.7GHz the WMMG provides extra gain performance where it is needed most.

The rugged, weatherproof housing is designed for wall mounting. Wall and mast mount brackets are provided.

5 metres (16') of fitted low loss double shielded twin cable minimises exposed connector joints and simplifies cable management for easy installation.

The WMMG is a cost effective value added product for network operators and service providers ensuring a stable link with improved data rates for subscribers thereby improving satisfaction and retention.

Technical Drawing



Wall Mount Gain MiMo Antenna

WMMG-7-27

Product Data

Part No.		WMMG-7-27-5SP
Frequency Range	Element 1	698-960 / 1710-2700 MHz
	Element 2	698-960 / 1710-2700 MHz
Operational bands		2G / 3G / 4G
Radiation pattern		Hybrid
VSWR (excluding cable)		< 3:1
Peak Gain (excluding cable loss)	698-960 MHz	2dBi
	1710-2170 MHz	5dBi
	2.2-2.7 GHz	4dBi
Efficiency - Excluding Cable Loss (all bands)		> 50%
Correlation Co-efficient (all bands)		< 0.2
Element Isolation		> 20dB
Max Input Power		20 W
Impedance		50Ω
Mechanical Data		
Dimensions	Height	155mm (6.1")
	Width	155mm (6.1")
Operating Temp.		-30° / +80°C (-22° / 176°F)
Material		ASA
Colour		RAL9010 (Pure White)
Weight		1100g
Mounting Data		
Fixing		Wall mount / Mast mount / Desk mount
Mounting Bracket Material		Stainless steel / Aluminium
Pole Diameter		20-50mm / (0.78 - 1.96")
Cable Data		
Type		2 x CS29 Coax
Diameter		5mm (0.2")
Length		5m (16')
Termination		2 x SMA (m)

* Peak gain simulated with all elements fed on 600x600mm ground plane excluding cable loss

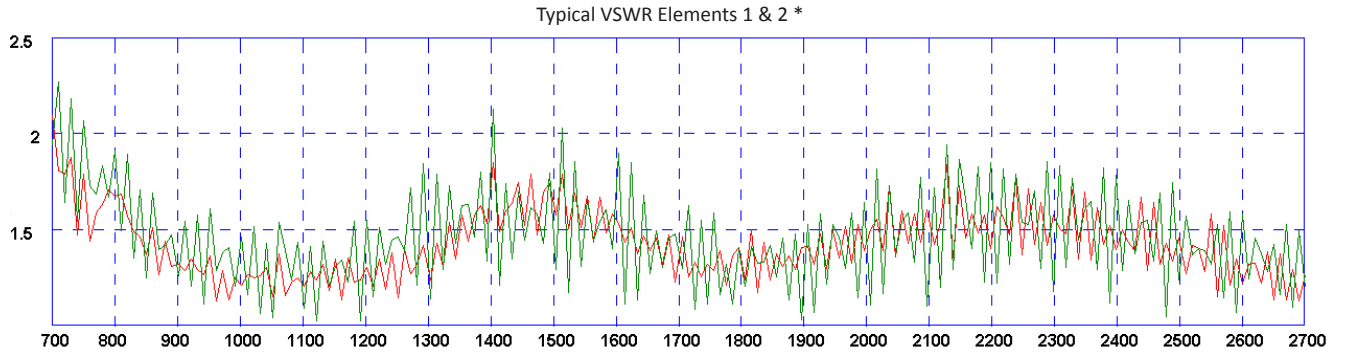
Panorama Antennas Ltd

Frogmore, London, SW18 1HF, United Kingdom
T: +44 (0)20 8877 4444 | F: +44 (0)20 8877 4477
E: sales@panorama-antennas.com
W: www.panorama-antennas.com

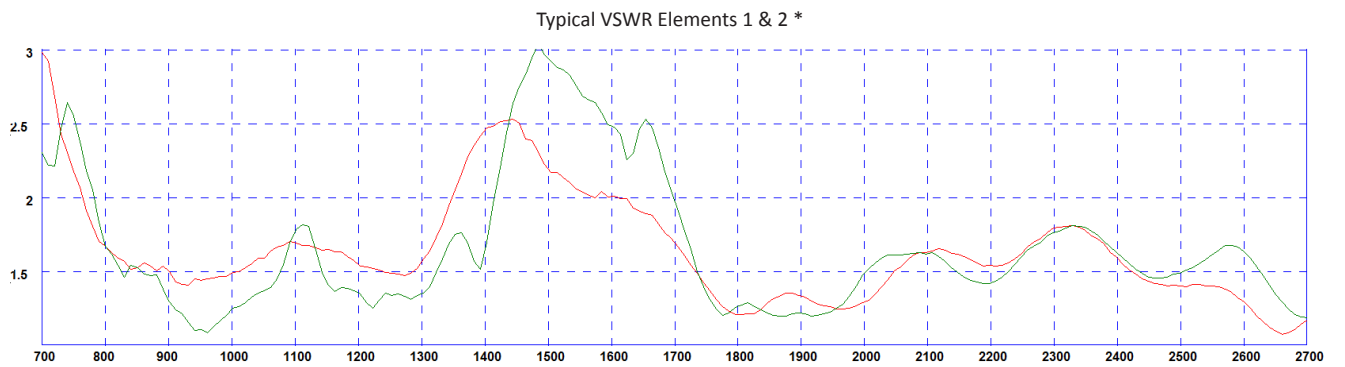
Wall Mount Gain MiMo Antenna

WMMG-7-27

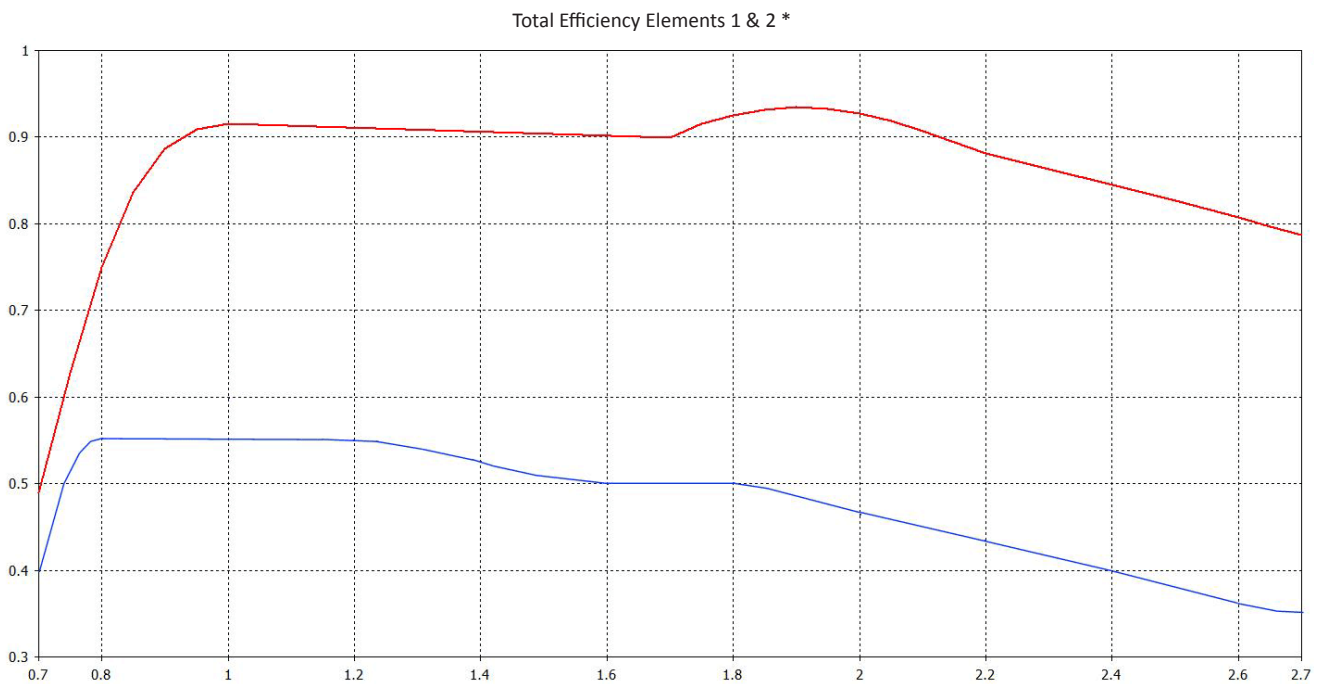
Electrical Data



*VSWR Measured with 5m (17') of CS29 cable



*VSWR measured without cable

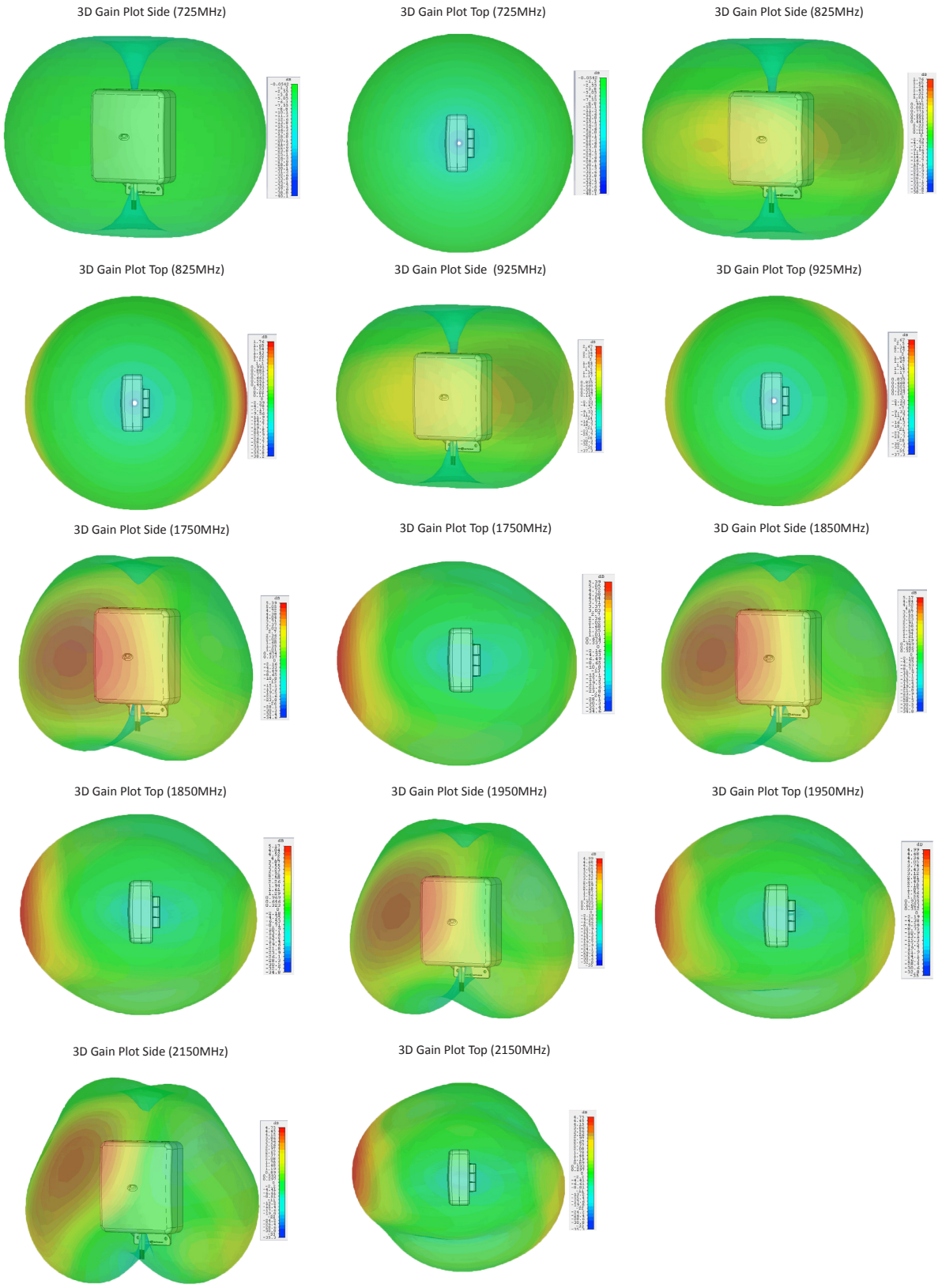


*Blue Trace = typical total efficiency with 5m (17') of CS29 cable Red Trace = typical total efficiency without cable simulated in CST Microwave Studio

Wall Mount Gain MiMo Antenna

WMMG-7-27

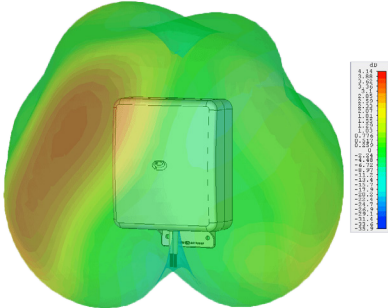
Radiation Plots



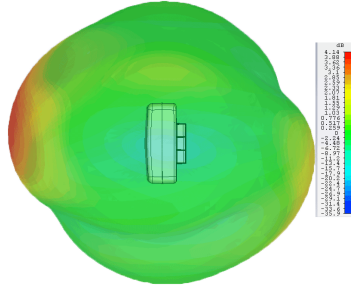
Wall Mount Gain MiMo Antenna

WMMG-7-27

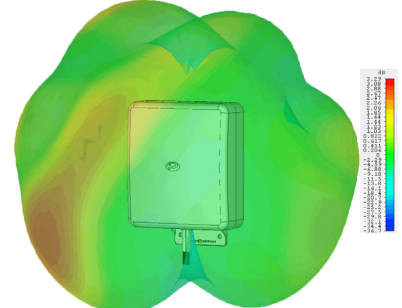
3D Gain Plot Side (2300MHz)



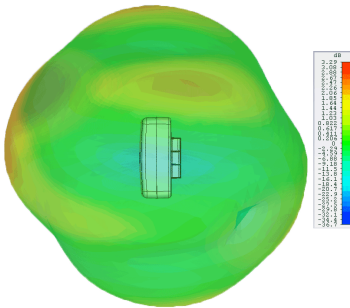
3D Gain Plot Top (2300MHz)



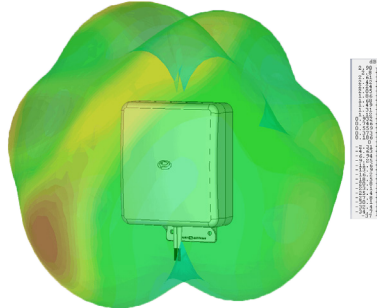
3D Gain Plot Side (2550MHz)



3D Gain Plot Top (2550MHz)



3D Gain Plot Side (2650MHz)



3D Gain Plot Top (2650MHz)

